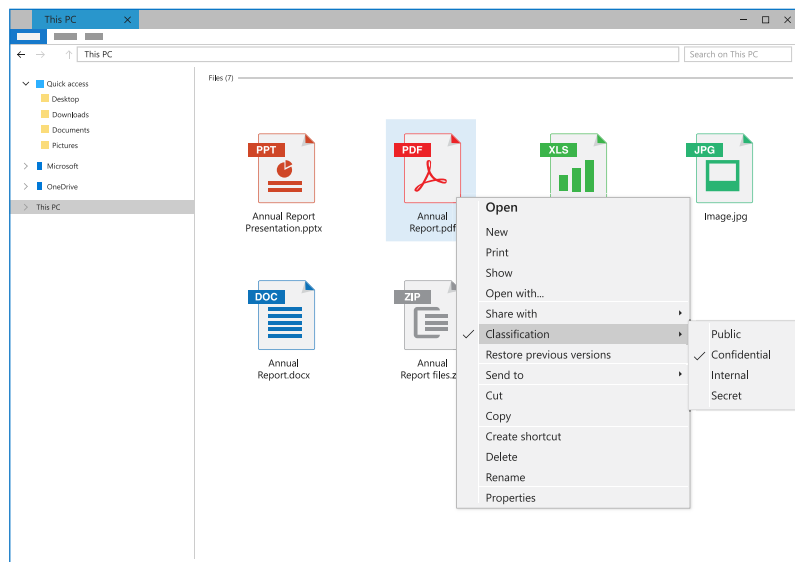


## DATASHEET

As the volume of unstructured information grows, the risk of data leakage grows with it. With only a few clicks, users can copy sensitive files from their desktop to email, USB drives, instant messages, and other data leakage points. This increases the risk of serious data leaks, including the disclosure of sensitive information and intellectual property contained in PDFs, videos, images, and design documents.

Titus Classification for Desktop provides the first step in protecting sensitive files from data leakage. By enabling users to assign classifications to any file, Titus Classification for Desktop identifies the value and sensitivity of information so organizations can manage, secure, and share that information. The user's classification selection is stored with the file as persistent metadata, which organizations can use to increase the accuracy and effectiveness of DLP, archiving, and perimeter security solutions.



Classify any file in seconds via a single, easy-to-use dialog

## HIGHLIGHTS

Titus Classification for Desktop enables the classification of any file type in a Microsoft Windows® environment. The solution helps organizations:

- Classify files to prevent data loss
- Promote awareness and accountability
- Comply with regulations and policies
- Leverage metadata to enhance downstream solutions

## TRY IT!

Contact us to request a free trial.

## SYSTEM REQUIREMENTS

Titus Classification for Desktop supports:

- Windows 7 SP1 (32 & 64 bit)
- Windows 8.1 (64 bit)
- Windows 10
- Windows Server 2008 R2 SP1 (64 bit)
- Windows Server 2012 R2 (64 bit)

The software is client-based and requires no server or additional infrastructure.

# Titus Classification **for Desktop**

KEY FEATURE	BENEFIT
Classify any file	Enables users to classify and protect sensitive information and intellectual property contained in any file, including PDFs, videos, images, ZIP files, and design documents.
Right-click classify	Provides a simple right-click classification menu that guides users when classifying single or multiple files in Windows.
Visual identification	Visually identifies file sensitivity in Windows Explorer via a classification menu and customizable classification icons.
Persistent metadata	Stores the classification selection with the file as persistent metadata that is maintained even when transferring the file through email or to portable media such as USB drives. Classification metadata is also used to increase the accuracy and effectiveness of DLP, archiving, and perimeter security solutions.
Security enablement	Add an extra layer of security by automatically applying Microsoft Rights Management Services® based on the classification.
Ease of administration	Provides a centralized, web-based Administration Console for classification configuration and policy management across the entire Titus Classification Suite of products. Titus generates user activity logs that can be monitored and analyzed to measure the effectiveness of the security policies and detect anomalous usage.

## About Titus

Titus is a leader in providing solutions that enable businesses to accelerate their adoption of data protection. Millions of users in over 120 countries trust Titus to keep their data compliant and secure, including some of the largest financial institutions and manufacturing companies in the world, government and military organizations across the G-7 and Australia, and Fortune 2000 companies. To learn more about how Titus can help with CUI and CNSI marking and metadata programs visit [www.titus.com](http://www.titus.com).



Protect your data.  
**Free your business.**

